

Adelaide Metro's JetBus - to Adelaide Airport



NEW direct 7 days a week
JetBus services with early
starts and late finishes, link
the Airport and City through
to the North Eastern suburbs.
Allowing easy transfer to
most services in the City.



Government
of South Australia



MONDAY TO FRIDAY (J1 & J2)

CITY to Airport

City, Grenfell St
Airport Domestic Terminal

T3 F

AM SERVICE	
4.50	5.10
5.20	5.40
5.50	6.10
Every 15 mins until 8.05am	
8.17	8.37
8.22	8.43
8.37	8.58
8.52	9.13
9.07	9.28
9.20	9.43
Every 15 mins until 10.35pm	
PM SERVICE	
11.05	11.25
12.05	12.25

Airport to CITY

City, Grenfell St
Airport Domestic Terminal

F F2

AM SERVICE	
5.20	5.45
5.50	6.15
6.20	6.45
Every 15 mins until 7.35am	
7.45	8.15
8.00	8.30
8.15	8.45
8.30	9.00
8.42	9.07
8.50	9.15
Every 15 mins until 11.05pm	
PM SERVICE	
11.35	11.55

MONDAY TO FRIDAY (J1 & J2)

TEA TREE PLAZA to Airport

Tea Tree Plaza Interchange
City, Grenfell St
Paradise Interchange
Airport Domestic Terminal

T3 F

AM SERVICE			
5.00	5.06	5.20	5.40
5.30	5.36	5.50	6.10
Every 15 mins until 7.45am			
7.55	8.01	8.17	8.37
8.00	8.06	8.22	8.43
Every 15 mins until 10.15pm			
PM SERVICE			
10.45	10.51	11.05	11.25

Airport to TEA TREE PLAZA

Tea Tree Plaza Interchange
City, Grenfell St
Paradise Interchange
Airport Domestic Terminal

F F2

AM SERVICE			
5.50	6.15	6.29	6.35
6.20	6.45	6.59	7.05
Every 15 mins until 7.35am			
7.45	8.15	8.29	8.35
8.00	8.30	8.44	8.50
8.15	8.45	8.59	9.05
8.30	9.00	9.14	9.20
8.50	9.15	9.29	9.35
Every 15 mins until 11.05pm			
PM SERVICE			
11.35	11.55	12.09	12.15

MONDAY TO FRIDAY (J2)

GREENWITH to Airport

Greenwith Community Ctr
Airport Domestic Terminal

73 F

AM SERVICE	
5.53	6.55
6.23	7.25
7.38	8.42
8.23	9.28
Every 30 mins until 10.50pm	
PM SERVICE	
3.25	4.30
Every 30 mins until 4.55pm	

Airport to GREENWITH

Greenwith Community Centre
Airport Domestic Terminal

F 73

AM SERVICE	
7.35	8.40
8.00	9.10
8.30	9.40
9.05	10.10
Every 30 mins until 3.30pm	
PM SERVICE	
5.35	6.43
6.05	7.10



JetBus timetable

- City to Airport • Greenwith to Airport
 - Tea Tree Plaza to Airport
 - Golden Grove Village to Airport
 - Elizabeth Station to Airport
- 7 days a week 4.50am - 11.05pm**

MONDAY TO FRIDAY (J1 & J2)

GOLDEN GROVE VILLAGE to Airport

Golden Grove Village
Paradise Interchange
City, Grenfell St
Airport Domestic Terminal

T3 F

AM SERVICE			
5.33	5.51	6.05	6.25
5.48	6.06	6.20	6.40
Every 15 mins until 7.35am			
7.43	8.01	8.17	8.37
7.48	8.06	8.22	8.43
8.03	8.21	8.37	8.58
Every 15 mins until 10.35pm			
PM SERVICE			
7.33	7.51	8.05	8.25
Every 30 mins until 10.33pm			

Airport to GOLDEN GROVE VILLAGE

Golden Grove Village
Paradise Interchange
City, Grenfell St
Airport Domestic Terminal

F F2

AM SERVICE			
5.50	6.15	6.29	6.47
6.20	6.45	6.59	7.17
Every 15 mins until 8.30am			
8.50	9.15	9.29	9.47
Every 15 mins until 7.05pm			
PM SERVICE			
7.35	7.55	8.09	8.27
Every 30 mins until 11.35pm			

MONDAY TO FRIDAY (J1)

ELIZABETH STATION to Airport

Elizabeth Station
Airport Domestic Terminal

F F

AM SERVICE	
5.30	6.40
6.00	7.10
6.30	7.40
6.45	7.55
7.00	8.10
7.13	8.25
7.23	8.37
7.45	8.58
8.00	9.13
Every 30 mins until 6.00pm	

Airport to ELIZABETH STATION

Elizabeth Station
Airport Domestic Terminal

F F

AM SERVICE	
5.50	7.05
6.20	7.35
6.35	7.50
7.05	8.20
7.20	8.35
7.45	9.05
8.15	9.35
8.50	10.05
Every 30 mins until 3.30pm	
PM SERVICE	
4.05	5.23
Every 15 mins until 5.20pm	
5.50	7.05
6.35	7.45



Adelaide Metro's Adelaide FREE in the City

Adelaide FREE offers two FREE services "City Loop & Bee Line"

City Loop - 99C

The City Loop service takes you on a loop around the City taking in the Museum, State Library, Art Gallery, Royal Adelaide Hospital, Botanic Gardens, Rundle Street (East End), Tandanya, the Central Markets, the Hindley Street precinct and the Universities. The bus connects with services for the O-Bahn, the Glenelg Tram, the Adelaide Railway Station & the JetBus Services to the Airport.



Bee Line - 99B

The Bee Line takes you through the centre of the City via North Terrace, King William Street and Victoria Square, stopping at Rundle Mall, the Town Hall and the Central Markets. The bus connects with services for the O-Bahn, the Glenelg Tram, the Adelaide Railway Station & the JetBus Services to the Airport.



WEEKENDS & PUBLIC HOLIDAYS (J1 & J2)

CITY to Airport



AM SERVICE	
4.50	5.10
Every 30 mins until 8.30am	
9.05	9.28
Every 15 mins until 10.35pm	
PM SERVICE	
11.05	11.25
12.05	12.25

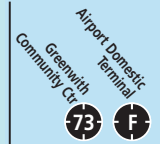
Airport to **CITY**



AM SERVICE	
5.20	5.40
Every 30 mins until 9.20am	
9.35	9.55
Every 15 mins until 11.05pm	
PM SERVICE	
11.35	11.55

WEEKENDS & PUBLIC HOLIDAYS (J2)

GREENWITH to Airport



AM SERVICE	
6.10	7.10
7.10	8.13
Every hour until 6.10pm	

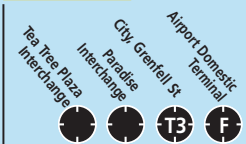
Airport to **GREENWITH**



AM SERVICE	
10.05	11.05
Every hour until 5.05pm	

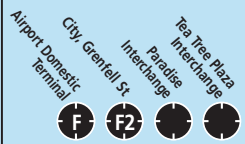
WEEKENDS & PUBLIC HOLIDAYS (J1 & J2)

TEA TREE PLAZA to Airport



AM SERVICE			
6.00	6.06	6.20	6.40
Every 30 mins until 8.30am			
8.45	8.51	9.05	9.28
Every 15 mins until 10.15pm			
PM SERVICE			
10.45	10.51	11.05	11.25

Airport to **TEA TREE PLAZA**



AM SERVICE			
6.50	7.10	7.24	7.30
Every 30 mins until 9.20am			
9.35	9.55	10.09	10.15
Every 15 mins until 11.05pm			
PM SERVICE			
11.35	11.55	12.09	12.15

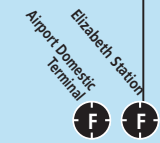
WEEKENDS & PUBLIC HOLIDAYS (J1)

ELIZABETH STATION to Airport



AM SERVICE	
6.30	7.43
Every hour until 4.30pm	

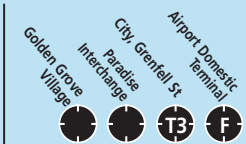
Airport to **ELIZABETH STATION**



AM SERVICE	
8.20	9.30
9.35	10.45
Every hour until 5.55pm	

WEEKENDS & PUBLIC HOLIDAYS (J1 & J2)

GOLDEN GROVE VILLAGE to Airport



AM SERVICE			
6.18	6.36	6.50	7.10
Every 30 mins until 6.30pm			
7.03	7.21	7.35	7.55
Every 30 mins until 10.33pm			
PM SERVICE			
7.03	7.21	7.35	7.55
Every 30 mins until 10.33pm			

Airport to **GOLDEN GROVE VILLAGE**



AM SERVICE			
8.20	8.40	8.54	9.12
9.35	9.55	10.09	10.27
Every 30 mins until 5.35pm			
PM SERVICE			
5.50	6.10	6.30	6.42
6.05	6.25	6.45	6.57
Every 30 mins until 11.35pm			

JetBus timetable

- City to Airport • Greenwith to Airport
- Tea Tree Plaza to Airport
- Golden Grove Village to Airport
- Elizabeth Station to Airport

7 days a week 4.50am - 11.05pm

JetBus Connecting to the rest of Adelaide on your Metro Ticket



The new JetBus services* A direct service to the Airport Terminal

The NEW direct 7 days a week JetBus service links the Airport* and City through to the North Eastern suburbs and Elizabeth with a limited stop route that allow connections to most services in the City.

Services depart the City as early as 4.50 am and run through to 12.05 am. JetBus One and JetBus Two services operate approximately every 15 minutes for most parts of the day, 7 days a week.

DESTINATIONS

JetBus One – J1* Linking Golden Grove to the O-Bahn, City, Inner Western suburbs and Airport.

JetBus Two – J2* Direct service from Greenwith Community Centre to Golden Grove, then via the O-Bahn, City, Inner Western suburbs and Airport.

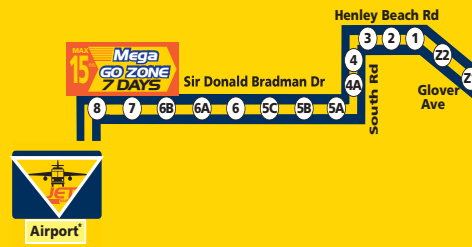
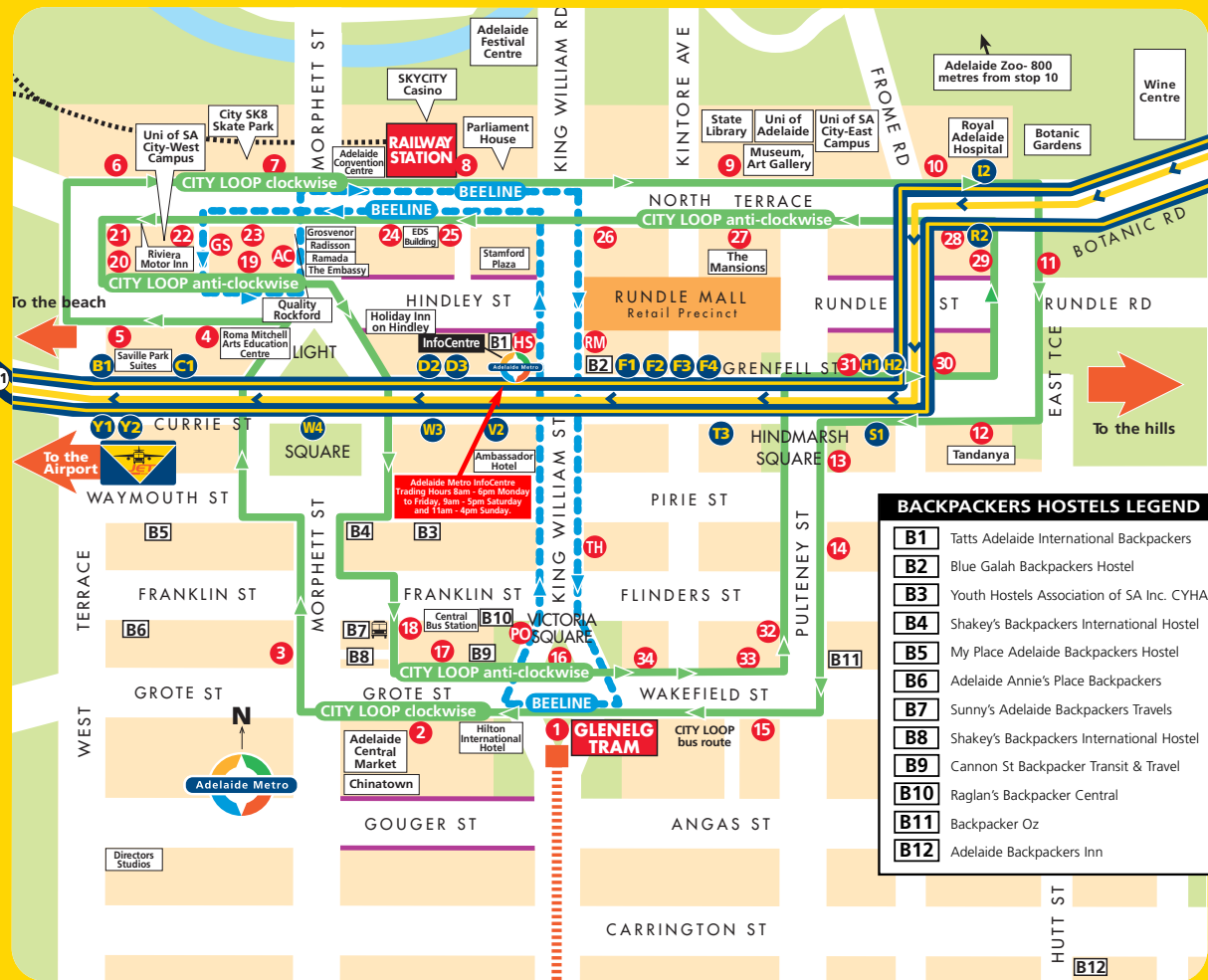
JetBus to Elizabeth* Some J1 services will also link Elizabeth to the Airport via Golden Grove, the O-Bahn, City and Inner Western suburbs.

JetBus's terminating in the City only

- C1 - Elizabeth, Golden Grove or Tea Tree Plaza to City only
- C2 - Greenwith Community Centre to City only
- J1C - Airport to City only

JetBus's terminating at Greenwith, Golden Grove or Tea Tree Plaza only

- J1G - terminates at Golden Grove
- J1T - terminates at Tea Tree Plaza
- J2D - terminates at Golden Grove/Greenwith Rds, Greenwith



LEGEND FOR MAP

- JetBus Route
- Mega Go Zone Route
- FREE City Loop Bus Route runs every 15 minutes in both directions
 - Mon-Thurs 8.00am - 6.00pm
 - Friday 8.00am - 9.15pm
 - Saturday: Runs every 30mins 8.15am - 5.15pm
 - Sunday: Runs every 30mins 10.00am - 5.15pm
- FREE BeeLine Bus Route runs every 5 minutes
 - Mon-Thurs 7.40am - 6.00pm
 - Friday 7.40am - 9.20pm
 - Saturday: Runs every 17mins 8.27am - approx 10.30am then every 15 mins 10.30am - 5.35pm
 - Sunday: Runs every 15mins 10.00am - 5.30pm
- Glenelg Tramway
- Railway
- Central Bus Station (Intra and Interstate Bus services)
- Adelaide Free Bus Stop
- JetBus bus stops
- City JetBus stops
- Mega Go Zone bus stops
- Café/Restaurant Precinct
- Backpacker/Hostels
- All Adelaide FREE buses are fully accessible and feature low floors and ramps

BACKPACKERS HOSTELS LEGEND

B1	Tatts Adelaide International Backpackers
B2	Blue Galah Backpackers Hostel
B3	Youth Hostels Association of SA Inc. CYHA
B4	Shakey's Backpackers International Hostel
B5	My Place Adelaide Backpackers Hostel
B6	Adelaide Annie's Place Backpackers
B7	Sunny's Adelaide Backpackers Travels
B8	Shakey's Backpackers International Hostel
B9	Cannon St Backpacker Transit & Travel
B10	Raglan's Backpacker Central
B11	Backpacker Oz
B12	Adelaide Backpackers Inn

Adelaide Metro InfoCentre Trading Hours 9am - 6pm Monday to Friday, 9am - 5pm Saturday and 11am - 4pm Sunday.

Adelaide Metro Train, Tram, O-Bahn & Go Zone Network



MAX 15 GO ZONE Go Zones are corridors that have services every 15 minutes from 7.30 am to 6.30 pm Monday to Friday.

MAX 15 Mega GO ZONE 7 DAYS The Mega Go Zone is a 7 days a week Go Zone. Connecting Tea Tree Plaza to the Airport*, 7 days a week. Maximum wait 15 minutes until 10.15 pm.

Direct Link to the Airport* 7 days a week JetBus services link the Airport and City through to the North Eastern suburbs and Elizabeth. Services depart the City as early as 4.50 am and run through to 11.05 pm. Jet 1 and 2 services operate approximately every 15 minutes for most parts of the day, 7 days a week.

* Servicing the Domestic Terminal only until the opening of the new Terminal in October 2005.



A great day out for the price of a Daytrip ticket!

You can have a great day out on the Adelaide Metro public transport system and pay no more than the cost of a Daytrip ticket for the entire day's travel.



A Daytrip allows unlimited travel and transfers on the Adelaide Metro system from the time of first validation until 4.30am in the morning. If you're a parent or guardian, a Daytrip ticket gives you the added bonus of **FREE** travel on weekends and public holidays for two children under 15.

Now that's a great reason to get up and go on the Adelaide Metro!

Need Help?



Infoline call 8210 1000

Lines open 7am - 8pm, 7 days a week.
For hearing impaired, call (TTY) on 8303 0844.



InfoCentre

Corner King William & Currie Streets, Adelaide.
Open 8am - 6pm Monday to Friday, 9am - 5pm Saturday and 11am - 4pm Sunday.



Our Drivers

Adelaide Metro drivers are friendly, helpful and equipped with a wealth of information to make your journey a better experience.



adelaidemetro.com.au

Adelaide Metro's website offers all the information you will ever need including all timetable and route information, also guides on how to use the system and special attractions. Plus you can join our Adelaide Metro electronic mailing list and we can SMS or e-mail you with the latest updates.



Government of South Australia

ADELAIDE METRO INFOLINE
Call 8210 1000
www.adelaidemetro.com.au



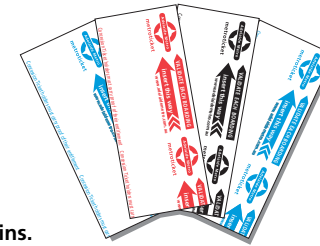
Where do I get my Metroticket?

Singletrip and Daytrip tickets are available from drivers on all buses & from conductors on all trams.

Multitrip tickets

You can save on the cost of a Singletrip ticket by purchasing a Multitrip or Daytrip ticket.

Multitrip tickets are not available for purchase on buses, trams or trains.



Multitrip, tickets can be purchased from:

- The InfoCentre (Corner King William and Currie Streets, Adelaide).
- Post Office Agencies displaying Metroticket signage
- Service Stations displaying Metroticket signage
- Newsagents displaying Metroticket signage
- Bus depots

It's easy to use your ticket!

Don't forget to stamp (validate) your ticket each time you board a public transport vehicle.

If you follow the step by step instructions shown below, you'll realise how easy this is.

1. Stamping (validating) machine

You'll find a stamping (validating) machine like this located near the boarding door of all buses, trains and trams.



2. Stamping (validating) your ticket

Insert your ticket into the slot on the stamping (validating) machine with the arrows facing up and pointing forward.

3. Your ticket is stamped (validated)

Release your ticket and the stamping (validating) machine will take, read and print details of your journey onto your ticket in seconds. The machine will then push the ticket back out for you to take.



4. Transferring to another bus, train or tram

If you need to transfer to another bus, train or tram as a part of your journey you will need to stamp (validate) your ticket in the stamping (validating) machine each time you board.

5. What if the red "X" lights up

If the red "X" lights up and the stamping (validating) machine beeps after you've inserted your ticket, don't be alarmed. Check that you've inserted the ticket the right way with the arrows facing up and pointing towards the stamping (validating) machine. Check that you are travelling on the correct ticket.

If the machine still rejects your ticket, purchase or use another ticket to complete your journey.

