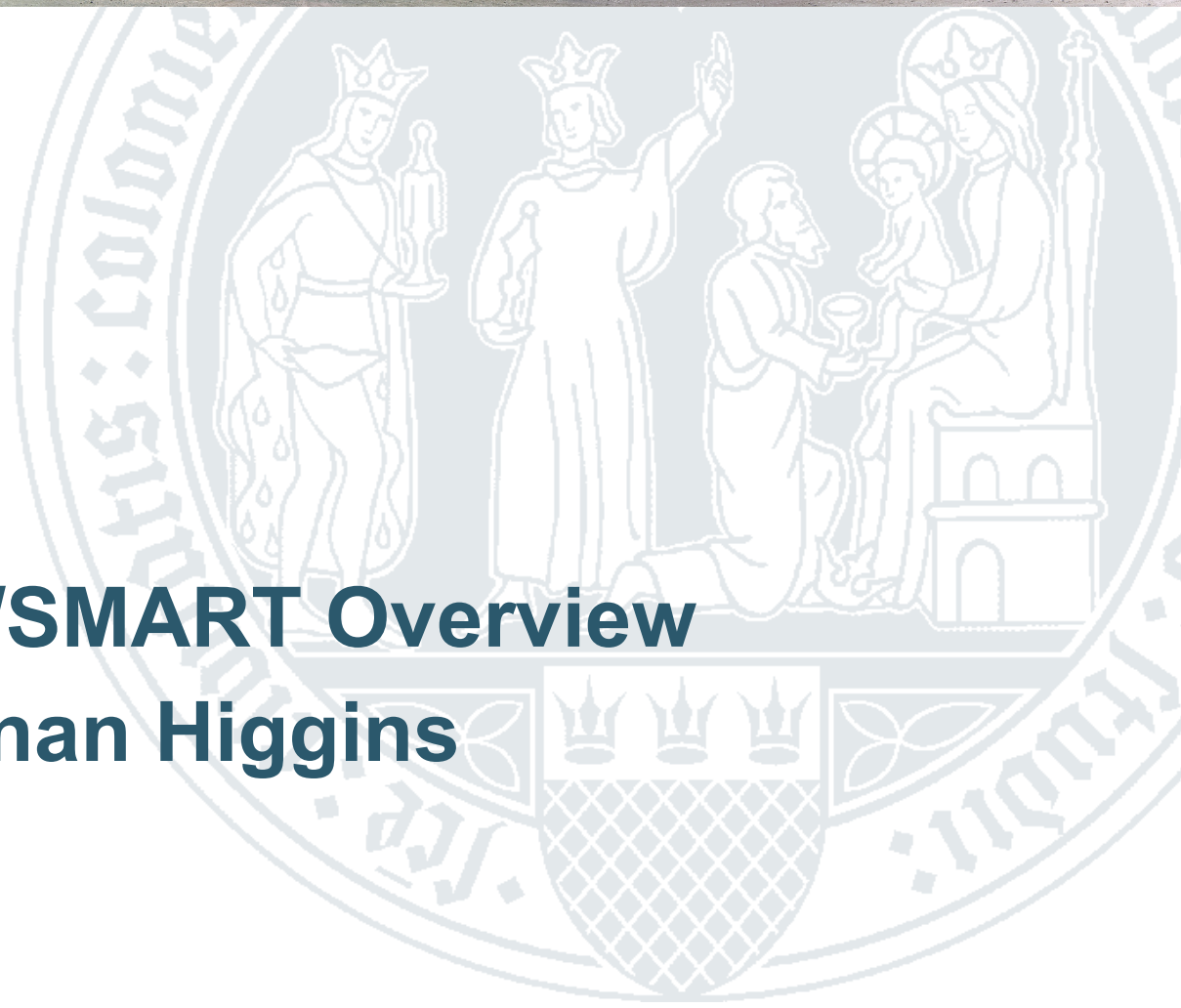




NANTEN/SMART Overview

Ronan Higgins



Problems from 2012 and fixes

- **SMART Problems**
 - ◆ **Rotator problem resolved after 2013 service mission**
 - Installation of new board and update of software
 - ◆ **Cold load problems**
 - Resolved with installation of new cold load electronics during service mission
 - ◆ **UPS failure August 2012**
 - Ongoing problems
- **Telescope problems**
 - ◆ **Load mirror failure, improved system installed problem resolved**
- **Generators problem, lost of power at site**
 - ◆ **New generator installed and working well (apart from snow influence)**



Problems of 2013 season

- **SMART technical problems**

- ◆ UPS failure due to over temperature, possible faulty unit (May 2013)
- ◆ Loss of 810 LO (September 2013)
- ◆ Problems with 490 LO control box (August 2013)
- ◆ Corruption of smartrx hard drive (May 2013)
- ◆ Corruption of smartxffts hard drive (November 2013)

- **Site Problems**

- ◆ Router failure (June, November 2013)
- ◆ Telescope end switch (September 2013)
- ◆ 2 generators power losses (During snow)
- ◆ Ongoing snow problems, any resolution, ideas?



2014 service mission : Software/computers

- **Computers**
 - ◆ Investigate control PC problems
 - ◆ smartrx also has problems, `sudo apt-get` not working for example
 - ◆ Install in place backups for smartxffts and smartobs machine
- **Machines need to be ordered and tested in Cologne**
- **Consider buying adderview system, allow vnc access during the bios setup**
- **Software**
 - ◆ Add second generator to monitoring software
 - ◆ test 100ms synctime on XFFTS



2014 upgrade for coming season

- **Autotuning algorithm**
 - ◆ Was promised for last year, Phd student recruited for work to on it this year
- **Better data processing, process data up to map level**
 - ◆ Auto baselining, line detection, regridding
- **Improve data distribution, better method than webdav? Better querying of data? Input needed**
- **Develop Scheduler to automate observing**
- **General feedback on all aspects welcome**

